

EBA 2127

max.
23
sheets

← **26 cm** →

Our entry model in the category of office document shredders with 260 mm feed opening and a large shred bin capacity.

Level P-2 4 mm strip cut (S)

Sheet capacity*: 21-23 | 18-20

Level P-4 4 x 40 mm particle cut (C)

Sheet capacity*: 16-18 | 13-15

Level P-5 2 x 15 mm particle cut (C)

Sheet capacity*: 10-12 | 8-10

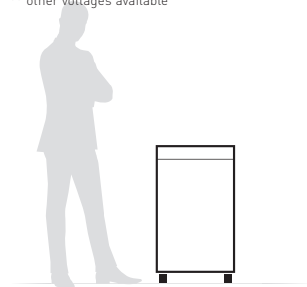


* A4 paper 70 g/m² | 80 g/m²

Technical specifications

| | |
|-----------------------|---|
| Volume | 100 litres (cabinet) 75 litres (shred bin) |
| Power | 230 V / 50 Hz** |
| Motor capacity | 580 Watt single phase motor |

** other voltages available



| | |
|---------------------------|--------------------------------|
| Dimensions | 870 x 500 x 377 mm (H x W x D) |
| Weight | 30 kg / 30.5 kg (particle cut) |
| ID-No. | 11250203 |
| GS certificate-No. | DP 10034 |

Product characteristics

SPS – (Safety Protection System) package: patented, electronically controlled, transparent safety flap in the feed opening as additional safety element; EASY-SWITCH – intelligent control element indicating the operational status of the shredder with varying colour codes and back-lit symbols; automatic reverse and power cut-off (avoids paper jams); automatic stop if the shred bin is full; electronic door protection via a magnetic proximity switch; double motor protection; ZERO ENERGY standby mode: Complete, automatic disconnection from power supply after 30 minutes. Photo cell controlled automatic start and stop. High-quality, paper clip proof cutting shafts from special hardened steel with lifetime guarantee. Strip cut model and 4 x 40 mm cross cut model suit-able for shredding the most common CDs/DVDs. Quiet but powerful single phase motor. Fully closed gear box housing and durable gears. High-quality wooden cabinet, mobile on castors. Convenient environmentally-friendly shred bin (no disposable shred bags required).

EBA 2127

Features



SOLID STEEL CUTTING SHAFTS

Robust and durable: high-quality paper clip proof cutting shafts with lifetime guarantee under conditions of fair wear and tear.



EASY-SWITCH

Ease of operation: intelligent multifunction switch element with integrated optical signals indicating the operational status. Additional "emergency switch" function.



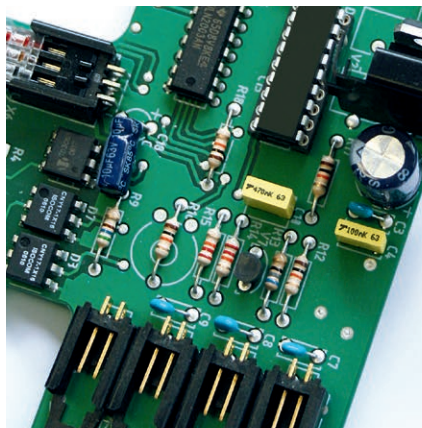
PATENTED SAFETY FLAP

Extremely safe: electronically controlled safety flap in the feed opening to keep fingers, ties or other objects away from the cutting shafts.



CONVENIENT SHRED BIN

The environmentally-friendly shred bin can be removed easily and cleanly from the cabinet. The bin can be used with or without disposable shred bag.



AUTOMATIC FUNCTIONS

Tried and tested: Reliable printed circuit board controlling all automatic functions of the shredder including the energy saving mode.



FIRST-CLASS COMPONENTS

Quality in every detail: cabinet with adjustable metal hinges and attractively designed swivel castors.



certificate
no. **DP 10034**
dated 19.01.2013

GS Test Certificate

Name and address of the holder of the certificate: (customer): **Krug & Priester GmbH & Co.KG**
Simon-Schweitzer-Straße 34
72336 Balingen

Name and address of the Manufacturer: see above

Product designation: **Paper Shredder**

Type: 11236001, 11240401, 11241001, 11250203, 11231001

Testing based on: DIN EN 60950-1:2011-01+A12:2011-08
EN 60950-1:2006-04+A11:2009-03+A1:2010-03+A12:2011-02
IEC 60950-1:2005-12+AMD1:2009-12
Information technology equipment – Safety; Part 1:
General requirements
EN 12100-2:2004 Safety of machinery – Basic concepts, general principles for design; Part 2: Technical principles
EN ISO 13857:2008 Safety of machinery – Safety distances to prevent hazard zones being reached by upper and lower limbs

Remarks: **This GS Test Certificate replaces the GS Test Certificate DP 10034 dated 25.09.2012.**

The type tested meets the requirements specified in article 21 para. 1 of the German Product Safety Act. The holder of the certificate is entitled to affix the GS mark shown overleaf to the products complying with the type tested. At that, the holder of the certificate shall observe the conditions specified overleaf.

The present certificate including the right to affix the GS mark is valid until: **21.03.2015**

Further provisions concerning the validity, the extension of the validity and other conditions are laid down in the Rules of Procedure for Testing and Certification of August 2012.



Signature (Dipl.-Wirt.-Ing. Birkenstock)

Postal address: Postfach • D-65173 Wiesbaden • Office: Rheinstr. 6-8 • D-65185 Wiesbaden
Phone: +49 (0) 611/131-8219 • E-Mail: pruefstelle-dp@bgetem.de
612.17-Po/Ds • Test report: A 09194 • Produktschlüsselnummer: 001.1001